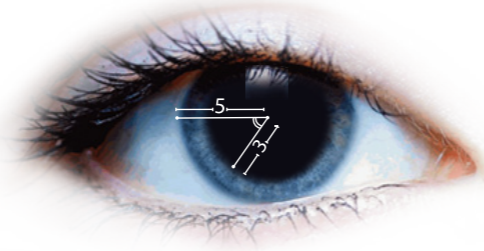


Eye Drops



The use of pupil-dilating eye drops containing Atropine Sulphate and similar chemical compounds will increase the chance of fooling the system; pioneered in 2005, IrisGuard patented technology detects abnormal dilation and alerts the operator to their presence in the eye.

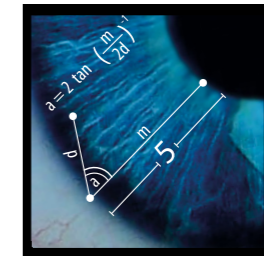
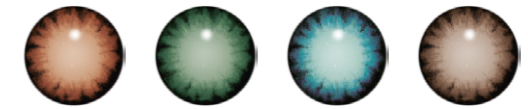
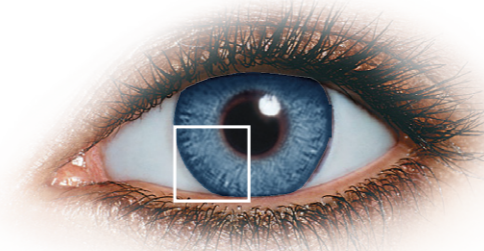


Contact Lenses



Patterned contact lenses may hide the human iris and can fool the iris recognition system. All IrisGuard imagers are trained to detect pattern contact lenses by means of careful pattern-analysis and other effective countermeasures preventing their use in live operations.

detect pattern contact lenses by means of careful pattern-analysis and other effective countermeasures preventing their use in live operations.



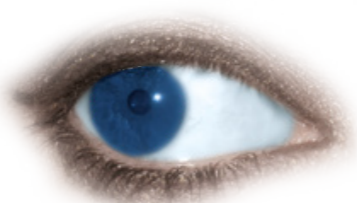
Blink Cancellation

A human being blinks approximately 30 times a minute lasting for a duration of roughly 400 milliseconds. IrisGuard ground-breaking blink technology analyzes images at the rate of 40+ frames/second prequalifying and precluding images that do not meet IrisGuard legendary quality controls.



Off-Axis Look

There is an increased chance that a person will not be found by the iris system if they simply look away from the camera. IrisGuard has off-axis technique and head-tilt detection that immediately alerts the operator.



Glass Neutralization

The specular reflections that form on a person's glasses require them to remove the glasses before using any iris system. IrisGuard has designed and patented a technology that allows the person to conveniently keep their glasses on while using the IrisGuard system.



Authenticity and Liveness

The use of photographic prints containing hi-resolution iris pictures or video recording of a person's iris may trick the iris system into accepting an imposter. IrisGuard imagers employ patented techniques to detect and stop such attacks.

